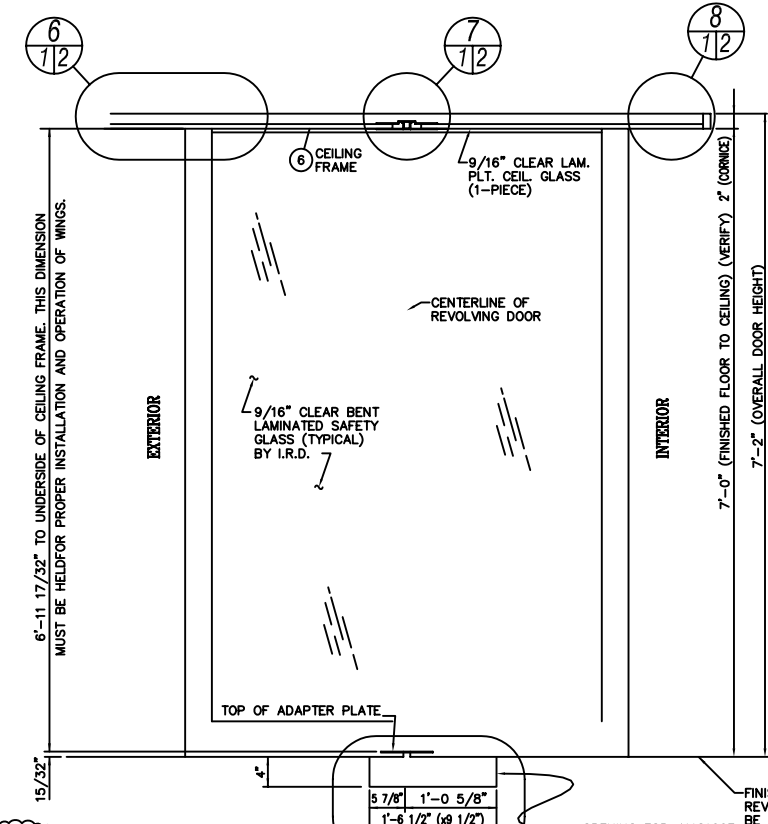


EXTERIOR ELEVATION
(CONNECTIONS NOT SHOWN)



SECTION AT 1/11
(WINGS NOT SHOWN)

ERECTION PROCEDURE

- LAY OUT ENTRANCE ON FINISHED FLOOR.
- SET ENCLOSURE WALLS UP IN PLACE. PLUMB AND LEVEL. VERIFY THAT WALLS ARE TO CORRECT RADIUS BY COMPARING TO FLOOR LAYOUT.
- MARK FLOOR FOR DOWEL LOCATIONS.
- REMOVE WALLS, DRILL FLOOR FOR DOWELS. REPLACE WALLS AND DOWEL TO FLOOR.
- PLACE AND SECURE CEILING TO WALLS. PLUMB AND LEVEL ASSEMBLY AND TIE TO SURROUNDING WORK.
- INSTALL CEILING GLASS AND SHIM PERIMETER TO LOCATE CENTERLINE OF PIVOT HOLE IN EXACT CENTER OF REVOLVING DOOR. SEE NOTE ON SHEET 1 & 2 OF DRAWINGS.
- INSTALL TOP PIVOT PER NOTE ON SHEET 2 OF DRAWINGS.
- PLUMB DOWN FROM TOP PIVOT. LOCATE AND SET FLOOR SPEED CONTROL. FILL VOID WITH QUICK-SET CEMENT.
- **9. INSTALL CENTERSHAFT. CHECK TOP PIVOT PIN TO BE LOCKED UP INTO BEARING WITH SET SCREW.
- HANG WINGS.
- GLAZE WALLS (SEE INSTRUCTION SHEET & JOB DRAWINGS.)
- INSTALL FLOOR LOCKKEEPERS.
- ** SHIMS MUST BE INSTALLED BETWEEN TOP OF DISC AND UNDERSIDE OF CEILING GLASS - SEE SHEET 2 OF DRAWINGS.

NOTE:
INTERNATIONAL REVOLVING DOOR DOES NOT RECOMMEND THE FOLLOWING TYPES OF FLOORS; SLICK, GLASSY FLOORS CAUSING PEDESTRIAN TO SLIP AND POSSIBLY FALL WHILE PUSHING WINGS. RUBBER MATS CAUSING THE PEDESTRIAN TO EXERT MORE PRESSURE TO PUSH WINGS, AND FULL FLOOR GRILLS CAUSING AIR INFILTRATION.

NOTE:
ACCESS TO TOP BEARING THRU REMOVABLE COVER AT TOP OF TOP PIVOT ASSEMBLY.

NOTE:
WINGS ARE EQUIPPED WITH EMERGENCY COLLAPSIBLE MECHANISM.

NOTE:
CONNECTING WORK TO BE DESIGNED TO BRACE & HOLD REV. DOOR SECURELY IN POSITION.

NOTE:
THIS ORDER WILL NOT BE FABRICATED UNTIL:
1. SHOP DRAWINGS ARE RECEIVED MARKED "APPROVED" FOR FABRICATION" BY THE GENERAL CONTRACTOR OR OTHER RESPONSIBLE PARTY.
2. FINISH SAMPLE IS RECEIVED MARKED "APPROVED".

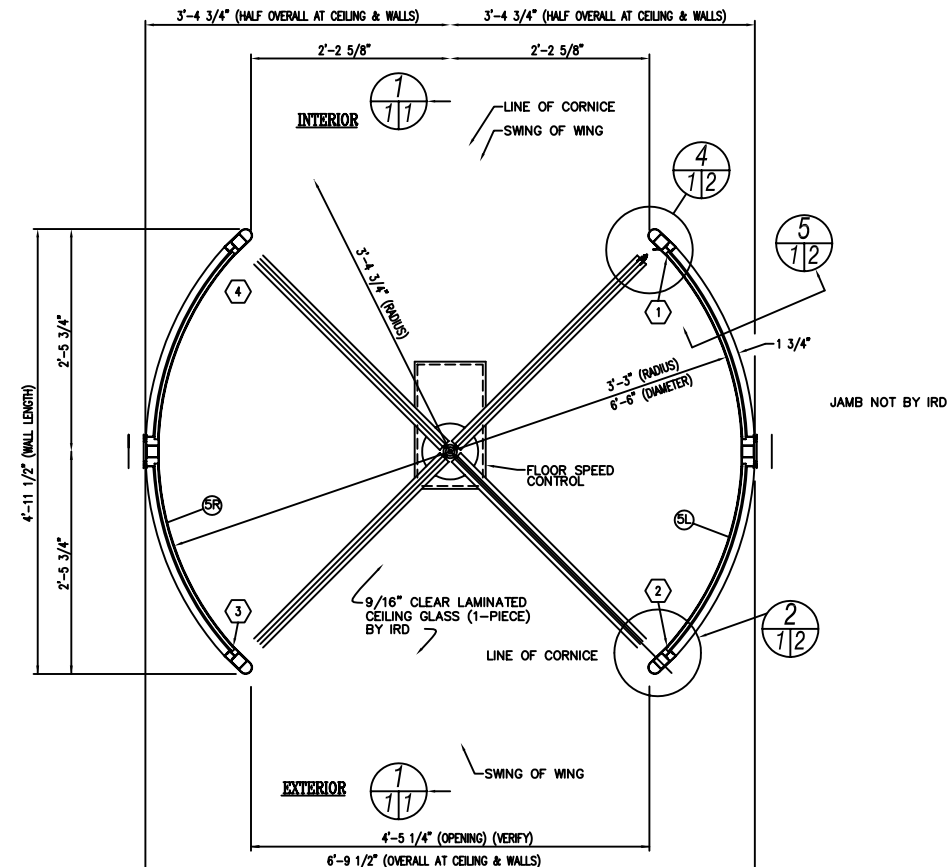
"APPROVED FOR DESIGN ONLY" DOES NOT CONSTITUTE SUFFICIENT APPROVAL TO ALLOW FABRICATION TO PROCEED.

INTERNATIONAL STEEL COMPANY WILL NOT BE RESPONSIBLE FOR VERIFICATION OF FIELD DIMENSIONS OR COORDINATION OF DRAWINGS AND DIMENSIONS OF WORK FURNISHED BY OTHER TRADES.

* CYLINDERS TO BE STANDARD 1 5/32" DIAMETER, 1" LENGTH (5-PIN) WITH STANDARD CAMS. SIMILAR TO ILCO UNICAN #PB-7165-YA-1-KA2. LONGER CYLINDERS WILL REQUIRE SPACING COLLARS.

NOTE:
NUMBER APPEARING IN O ARE FOR ERECTION ONLY. POSTS AND CEILING ARE MATCHMARKED IN SHOP.

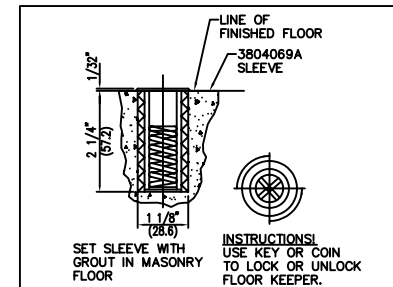
JOB NOTES			
GLAZING			
WINGS, REVOLVING DOOR			
GLAZE AT:	JOB:	SHOP:	<input checked="" type="checkbox"/>
GLASS BY:	INT'L:	OTHERS:	<input type="checkbox"/>
CEILING & WALLS, REVOLVING DOOR			
GLAZE AT JOB	WALL GLASS BY		
CEILING GLASS BY:	INT'L:	INT'L:	<input checked="" type="checkbox"/>
ELECTRIC WIRING AND FIXTURES TO BE FURNISHED BY OTHERS UNLESS SPECIFIED "BY INT'L" ON THIS DRAWING.			
NECESS IN FLOOR FOR FLOOR CHECKS, SPEED CONTROL, ETC., TO BE FURNISHED BY OTHERS.			
LOCK CYLINDERS *			
STANDARD:	<input checked="" type="checkbox"/>	MASTER KEYED:	<input type="checkbox"/>
BY INT'L:	<input checked="" type="checkbox"/>	BY OTHERS:	<input type="checkbox"/>
INTERIOR QUARTERLINE LOCKING			
EXTERIOR			
MARK WING NUMBERS AS SHOWN			
(1) REVOLVING DOOR PER THESE DETAILS			



PLAN VIEW

FLOOR COVERINGS LIKE CARPET, TILE, LINOLEUM, TERRAZO, RUBBER MAT, ETC. CANNOT BE ADDED TO THE FINISHED FLOOR INSIDE THE DRUM AFTER THE REVOLVING DOOR IS ERECTED, UNLESS CLEARANCE HAS BEEN ADDED TO BOTTOM OF WINGS AND DRUM IN THE SHOP. REVOLVING DOOR WALLS MUST BE SET ON SOLID MATERIAL. (NOT RUBBER MAT, CARPET, OR OTHER RESILIENT MATERIAL.)

NOTE:
REVOLVING DOOR IS NOT FREE STANDING AND REQUIRES A TRANSOM BAR TO HOLD REVOLVING DOOR PLUMB AND SECURE.



FLOOR KEEPER #3804122G
HEEL AND DUST PROOF

DATE	LOC. KEY	DESCRIPTION	BY		
REVISIONS					
WE ASSUME NO RESPONSIBILITY AS TO MEASUREMENTS OR DETAILS AFFECTING ANY WORK BUT OUR OWN AND ARE NOT RESPONSIBLE FOR ANY ERRORS OCCURRING THRU THE USE OF THIS DRAWING BY OTHER PARTIES.					
PRINTS ISSUED					
NO.	KEY	DATE	NO.	KEY	DATE
1 vel.	AP.				
3 B.L.	AP.				
KEY EXPLANATION					
AP. - APPROVAL	F.A. - FINAL APPROVAL	DB. - DISTRIBUTION	SI. - SHOP INSPECTION	ER. - ERECTION	RT. - REQUEST
				R.R. - REPR. REFERENCE	

INTERNATIONAL REVOLVING DOOR COMPANY
PH: 812-425-3311 -- FAX: 812-426-2682 -- TEL: 800-745-4728

JOB: --
LOCATION: --
MODEL TYPE: COMET 4-WING (GLASS CEILING)
ENTRANCE:
CUSTOMER:

MATERIAL	WINGS - EXTRUDED ALUMINUM & .060 STAINLESS STEEL
	WALLS - .060 STAINLESS STEEL
	CEILING - 9/16" CLEAR LAMINATED GLASS
	CANOPY FRAME - 1" x 2" STAINLESS STEEL
DETAIL SYMBOL	FINISH - #4 SATIN

THIS CAD DRAWING IN DESIGN AND DETAIL IS THE PROPERTY OF THE INTERNATIONAL STEEL COMPANY OF EVANSVILLE, INDIANA AND MUST NOT BE SHOWN, COPIED, REPRODUCED, LOANED OR OTHERWISE DISPOSED OF DIRECTLY OR INDIRECTLY, AND SHALL BE USED ONLY IN CONNECTION WITH ESTIMATES AND WORK OF THIS COMPANY. ALL RIGHTS OF INVENTION ARE RESERVED. THIS DRAWING MUST BE RETURNED WHEN REQUESTED

DRAWN: *RLC* DATE: 1/20/09 DOOR NO: --
CHECKED: DATE: DRAWING NO: --
SCALE: 1" = 1'-0" ORDER NO: --
SHEET 1 OF 2