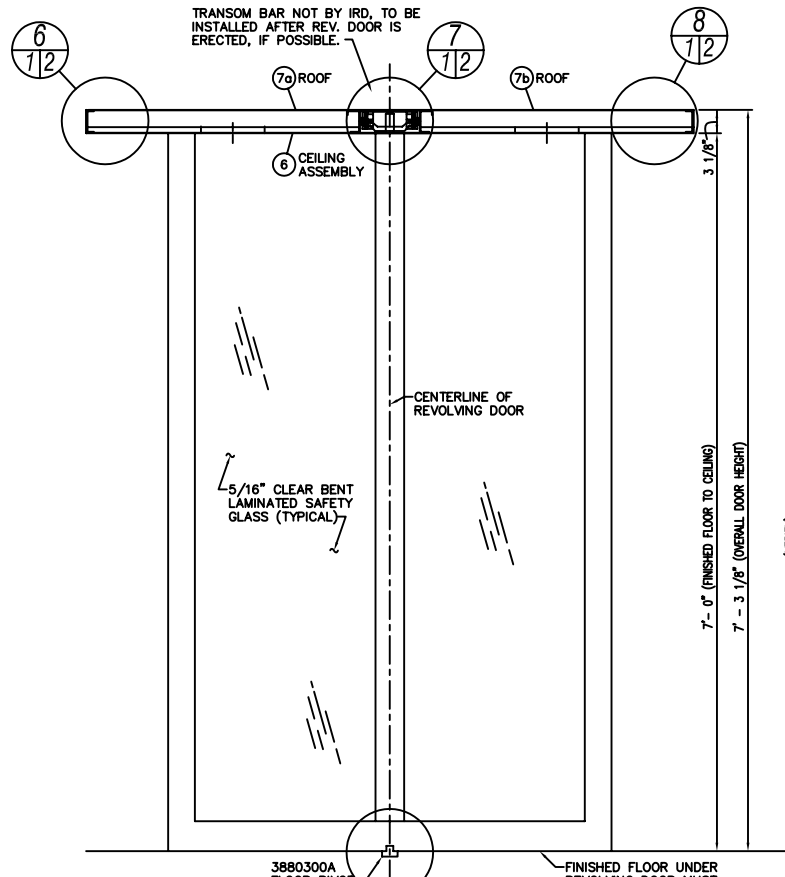


EXTERIOR ELEVATION
(CONNECTIONS NOT SHOWN)



SECTION AT 7/12
(WINGS NOT SHOWN)

CORRECT RADIUS BY COMPARING TO FLOOR LAYOUT.

CONTROL UNTIL PLUMB LINE IS IN EXACT

- 10.
11. CENTERSHAFT EXACTLY ON SHAFT UNTIL BOTTOM OF SPEED CONTROL IS ABOUT 1/16" ABOVE CEILING SHEET. LEVEL & CENTER SPEED CONTROL. TIGHTEN (4) FLANGE NUTS. CHECK ALIGNMENT OF KEYWAYS IN THE SHAFT AND GEAR. ROTATE SHAFT IN THE NORMAL DIRECTION, ONE HALF TO ONE TURN UNTIL KEYWAYS LINE UP. INSERT SHAFT KEYS.
12. ADD OIL TO SPEED CONTROL (TOTAL CONTENTS OF CAN). REPLACE SPEED CONTROL COVER PLATE AND SEAL WITH PERMATEX #2.
13. INSTALL WINGS.
14. CEILING LIGHTS TO BE WIRED BY ELECTRICAL CONTRACTOR. (SEE THIS SHEET)
15. GLAZE WALLS. (SEE INSTRUCTION SHEET)
16. INSTALL LOCKKEEPERS. (SEE SHEET #1)
17. INSTALL ROOF AND SEAL, IF REQUIRED.

NOTE:
ACCESS TO SPACE ABOVE SPEED CONTROL MUST BE FURNISHED AND REMAIN AVAILABLE FOR SERVICE AND ADJUSTMENT.
ACCESS TO THIS SPACE TO BE FURNISHED BY IRD THRU REVOLVING DOOR CEILING.

GENERAL CONTRACTOR NOTE:
SPEED CONTROL IS LOCATED DIRECTLY BENEATH ROOF COVER SHEET. DO NOT DRILL THRU ROOF COVER SHEET WITHOUT FIRST CONTACTING REVOLVING DOOR ERECTOR OR MANUFACTURER. ANY FASTENING TO ROOF COVER SHEET MUST NOT EXTEND MORE THAN 1/32" BELOW ROOF COVER SHEET WITHIN AREA REQUIRED FOR SPEED CONTROL.

NOTE:
110V. AC CURRENT REQUIRED FOR CEILING LIGHTS. ENTRANCE COMPONENTS WILL BE PREPARED AT FACTORY FOR PASSAGE OF WIRE. IF SOURCE AND/OR ROUTING IS VERIFIED ON APPROVED DRAWING.

NOTE:
NUMBER APPEARING IN ○ ARE FOR ERECTION ONLY. POSTS AND CEILING ARE MATCHMARKED IN SHOP.

NOTE:
ALL STEEL REINFORCING TO BE COATED WITH RUST PROHIBITING PAINT.

NOTE:
WINGS ARE EQUIPPED WITH EMERGENCY COLLAPSIBLE MECHANISM.

NOTE:
CONNECTING WORK TO BE DESIGNED TO BRACE & HOLD REV. DOOR SECURELY IN POSITION.

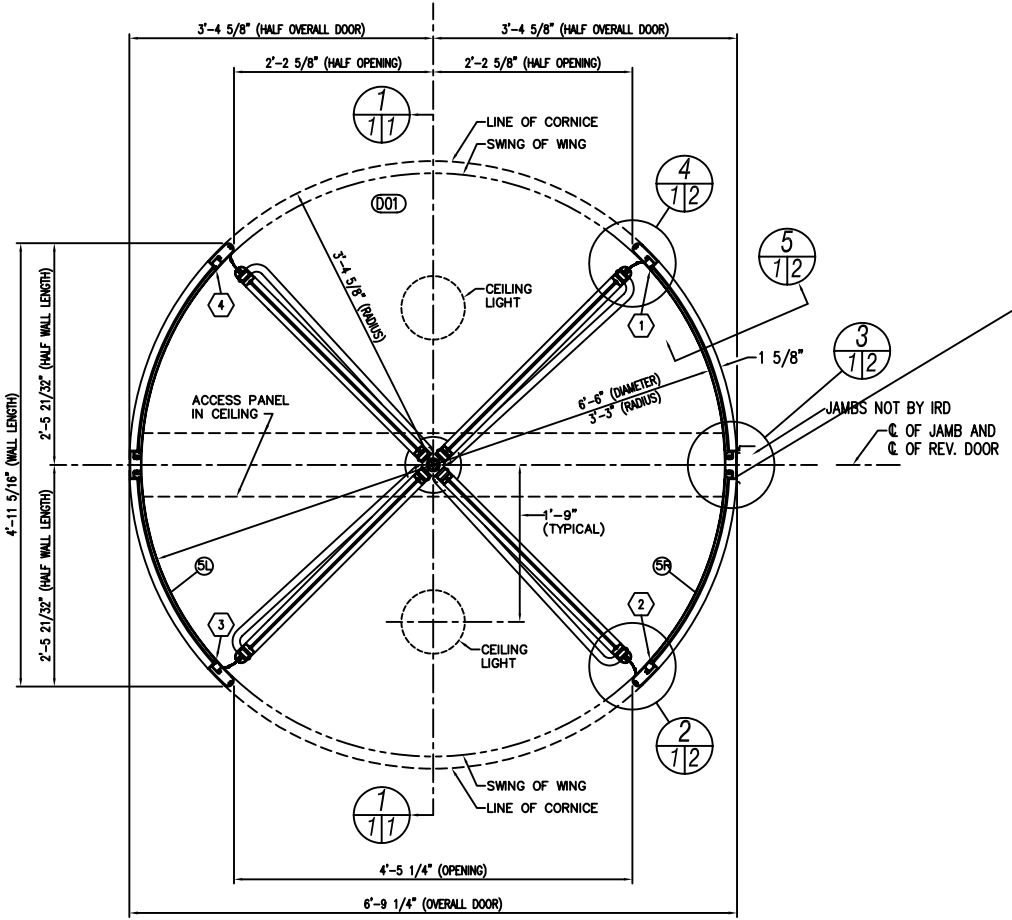
NOTE:
THIS ORDER WILL NOT BE FABRICATED UNTIL:
1. SHOP DRAWINGS ARE RECEIVED MARKED "APPROVED FOR FABRICATION" BY THE GENERAL CONTRACTOR OR OTHER RESPONSIBLE PARTY.
2. FINISH SAMPLE IS RECEIVED MARKED "APPROVED".

*"APPROVED FOR DESIGN ONLY" DOES NOT CONSTITUTE SUFFICIENT APPROVAL TO ALLOW FABRICATION TO PROCEED.

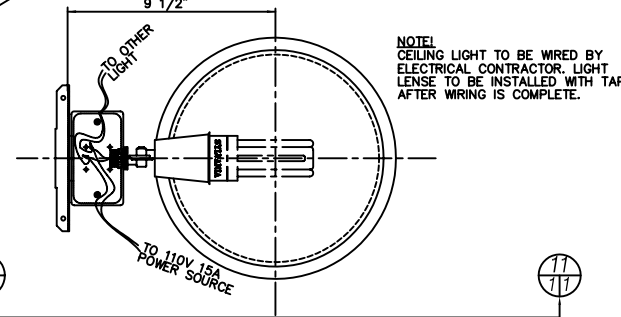
INTERNATIONAL REVOLVING DOOR COMPANY WILL NOT BE RESPONSIBLE FOR VERIFICATION OF FIELD DIMENSIONS OR COORDINATION OF DRAWINGS AND DIMENSIONS OF WORK FURNISHED BY OTHER TRADES.

*CYLINDERS TO BE STANDARD 1 5/32" DIAMETER, 1" LENGTH (5-PIN) WITH STANDARD CAMS. SIMILAR TO ILCO UNICAN #PB-7165-YA-1-KA2. LONGER CYLINDERS WILL REQUIRE SPACING COLLARS.

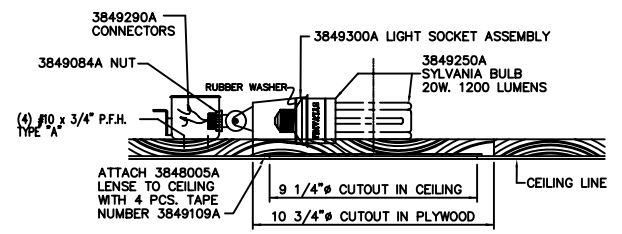
NOTE:
INTERNATIONAL REVOLVING DOOR DOES NOT RECOMMEND THE FOLLOWING TYPES OF FLOORS:
SLICK, GLASSY FLOORS CAUSING PEDESTRIAN TO SLIP AND POSSIBLY FALL WHILE PUSHING WINGS.
RUBBER MATS CAUSING THE PEDESTRIAN TO EXERT MORE PRESSURE TO PUSH WINGS. AND FULL FLOOR GRILLS CAUSING AIR INFILTRATION.



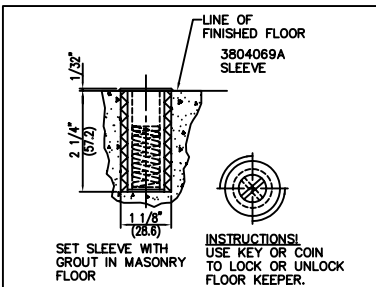
PLAN VIEW



PLAN OF CEILING LIGHT FROM ABOVE
(ROOF REMOVED)



SECTION AT 11/11



FLOOR KEEPER #3804122M
HEEL AND DUST PROOF

JOB NOTES			
GLAZING			
WINGS, REVOLVING DOOR			
GLAZE AT:	JOB: <input type="checkbox"/>	SHOP: <input checked="" type="checkbox"/>	
GLASS BY:	INT'L: <input checked="" type="checkbox"/>	OTHERS: <input type="checkbox"/>	
WALLS, REVOLVING DOOR			
GLAZE AT JOB			
GLASS BY:	INT'L: <input checked="" type="checkbox"/>	OTHERS: <input type="checkbox"/>	
ELECTRIC WIRING AND FIXTURES TO BE FURNISHED BY OTHERS UNLESS SPECIFIED "BY INT'L" ON THIS DRAWING.			
RECESS IN FLOOR FOR FLOOR CHECKS, SPEED CONTROL, ETC., TO BE FURNISHED BY OTHERS.			
LOCK CYLINDERS *			
STANDARD:	<input checked="" type="checkbox"/>	MASTER KEYED:	<input type="checkbox"/>
BY INT'L:	<input checked="" type="checkbox"/>	BY OTHERS:	<input type="checkbox"/>
INTERIOR QUARTERLINE LOCKING			
EXTERIOR			
MARK WING NUMBERS AS SHOWN			
(1) REV. DOOR PER THESE DETAILS			

DATE	LOC.	KEY	DESCRIPTION	BY	
REVISIONS					
WE ASSUME NO RESPONSIBILITY AS TO MEASUREMENTS OR DETAILS AFFECTING ANY WORK BUT OUR OWN AND ARE NOT RESPONSIBLE FOR ANY ERRORS OCCURRING THRU THE USE OF THIS DRAWING BY OTHER PARTIES.					
PRINTS ISSUED					
NO.	KEY	DATE	NO.	KEY	DATE
1	VEL	AP			
3	BL	AP			
4	BL	SHOP			
1	VEL	REC			
3	BL	REC			
1	BL	EREC			
KEY EXPLANATION					
AP - APPROVAL	ER - ERECTION				
F.A. - FINAL APPROVAL	RT. - REQUEST				
DB. - DISTRIBUTION	R.R. - REPR. REFERENCE				
SI. - SHOP INSPECTION					

INTERNATIONAL REVOLVING DOOR COMPANY

2138 N. SIXTH AVENUE, EVANSVILLE, INDIANA 47710-2895
TEL: (812) 426-3311 - (800) 745-4729 FAX: 812-426-2662
WWW.INTERNATIONALREVOLVINGDOOR.COM

JOB: STANDARD 6'-6" DIA x 7'-0" T ALUMINUM SATURN DESIGN

LOCATION: -

MODEL TYPE: SATURN 4 WING

CUSTOMER: -

MATERIAL	WINGS- EXTRUDED ALUMINUM
	WALLS- EXTRUDED ALUMINUM
	CEILING- .063" ALUMINUM
	ROOF- .063" ALUMINUM MILL FINISH
DETAIL SYMBOL	FINISH: 215-R1 CLEAR ANODIZE

THIS DRAWING IN DESIGN AND DETAIL IS THE PROPERTY OF THE INTERNATIONAL REVOLVING DOOR COMPANY OF EVANSVILLE, INDIANA AND MUST NOT BE SHOWN, COPIED, REPRODUCED, LOANED OR OTHERWISE DISPOSED OF DIRECTLY OR INDIRECTLY, AND SHALL BE USED ONLY IN CONNECTION WITH ESTIMATES AND WORK OF THIS COMPANY. ALL RIGHTS OF INVENTION ARE RESERVED. THIS DRAWING MUST BE RETURNED WHEN REQUESTED.

DRAWN: HTK	DATE: 1/2/09	DOOR NO: -
CHECKED:	DATE:	DRAWING NO: -
SCALE: 1" = 1'-0"		ORDER NO: -
SHEET 1	OF 2	